



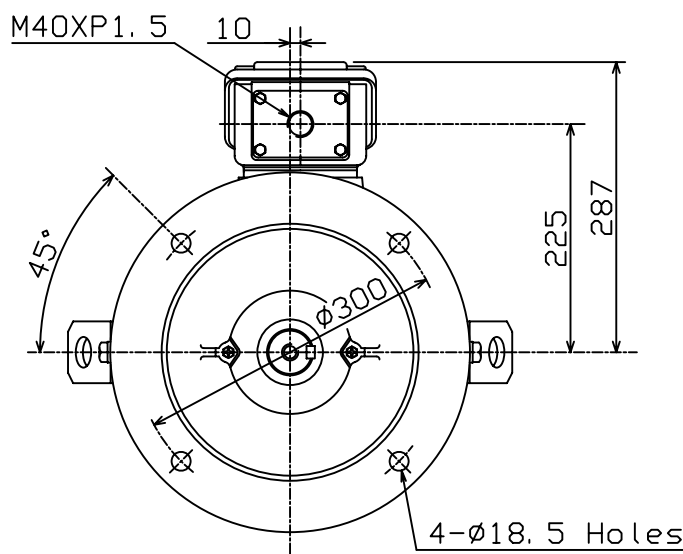
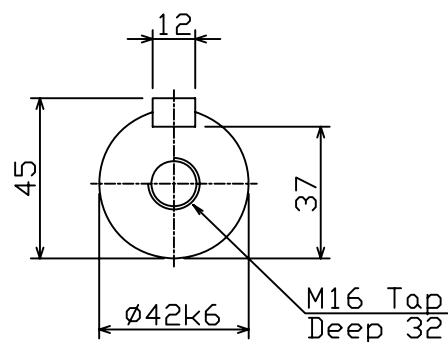
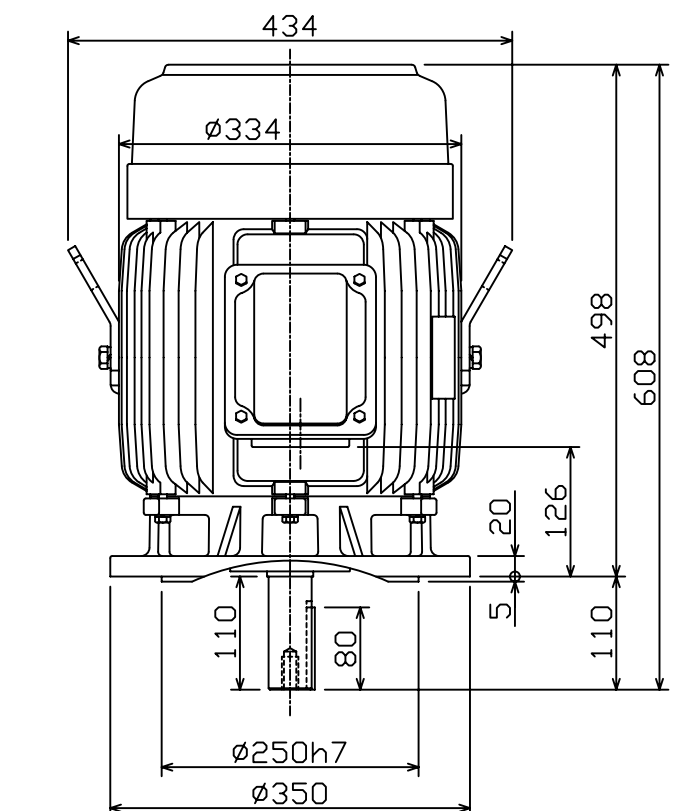
# OUTLINE DIMENSIONS 3-PHASE INDUCTION MOTOR

FRAME NO :

D160M

POLES	KW	HP	SYNCH RPM
2	11/15	15/20	3000
4	11	15	1500
6	7.5	10	1000
8	4/5.5	5.5/7.5	750

Totally Enclosed Fan-Cooled Type, Squirrel-Cage Rotor.



## NOTES:

1. FLANGE MOUNTED IM3001.
2. TYPICAL DIMENSIONS ONLY  
FOR CERTIFIED DIMENSIONS  
REFER TO TECO.
3. FOR BELT OR DIRECT DRIVE.

FOR MAXe3MINING AND  
AND MAXe3PREMIUM SEVERE DUTY

DWN.	EJ	01. 12. 15	東元電機股份有限公司 TECO ELEC. & MACH. CO., LTD. TAIWAN R. O. C.	REV : 00
CHKD.	DK	01. 12. 15		
APPD.	JF	01. 12. 15		