

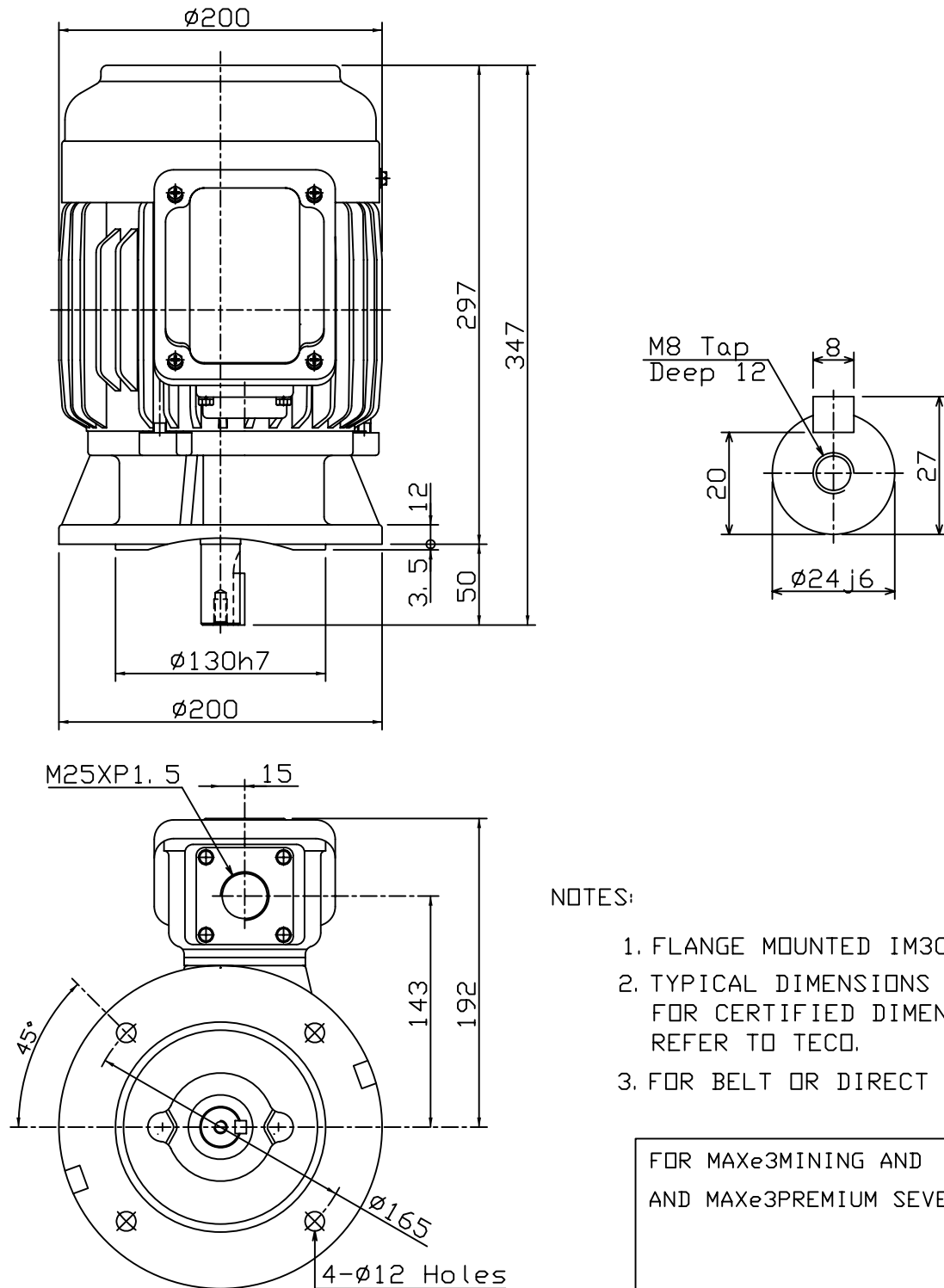
TECO

OUTLINE DIMENSIONS 3-PHASE INDUCTION MOTOR

FRAME NO :
D90S

| POLES | KW | HP | SYNCH RPM |
|-------|------|-----|-----------|
| 2 | 1.5 | 2 | 3000 |
| 4 | 1.1 | 1.5 | 1500 |
| 6 | 0.75 | 1 | 1000 |
| | | | |

Totally Enclosed Fan-Cooled Type, Squirrel-Cage Rotor.



NOTES:

1. FLANGE MOUNTED IM3001.
2. TYPICAL DIMENSIONS ONLY FOR CERTIFIED DIMENSIONS REFER TO TECO.
3. FOR BELT OR DIRECT DRIVE.

FOR MAXe3MINING AND
AND MAXe3PREMIUM SEVERE DUTY

| | | | | |
|-------|----|------------|--|----------|
| DWN. | EJ | 01. 12. 15 | <p>東元電機股份有限公司 TECO ELEC. & MACH. CO., LTD. TAIWAN R. O. C.</p> | REV : 00 |
| CHKD. | DK | 01. 12. 15 | | |
| APPD. | JF | 01. 12. 15 | | |