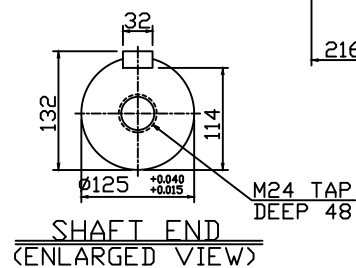
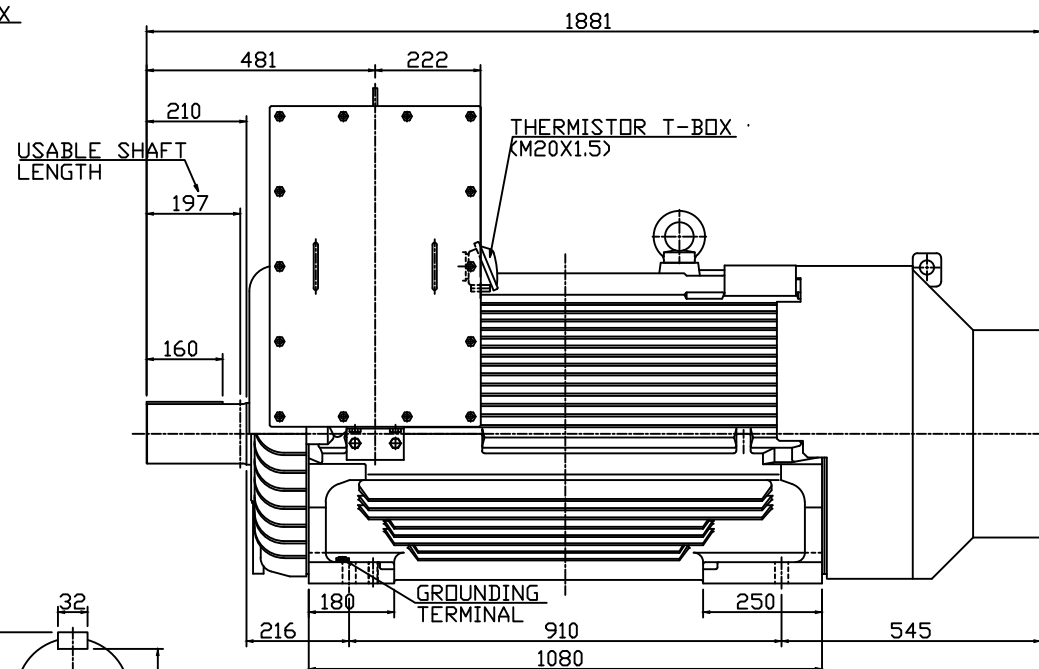
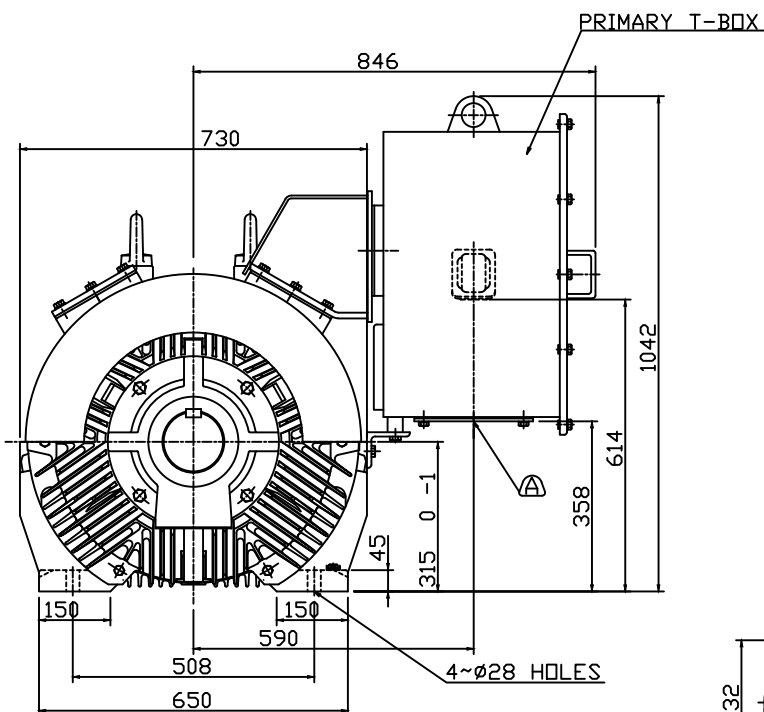


| TYPE | OUTPUT | | POLE | TIME RATING | VOLTAGE V | Hz | SYN.SPEED R.P.M |
|---------|--------|-----|------|----------------|--------------|----|--------------------|
| | HP. | kw. | | | | | |
| AFJE-MC | 500 | 375 | 4 | CONT. | 415 | 50 | 1500 |

TOTALLY ENCLOSED FAN-COOLED TYPE. SQUIRREL-CAGE ROTOR



NOTE:

1. DIMENSIONS IN MM
2. FRAME NO. 315DC
3. H CLASS INSULATION
4. FOR BELT DRIVE
5. ENCLOSURE: IP66
6. BEARING SIZE: DRIVE-END NU326
OPP. DRIVE-END 6220
7. WITH THERMISTOR: PTC 150°C 3PCS<ALARM>
WITH THERMISTOR: PTC 160°C 3PCS<TRIP>
8. APPROX. WEIGHT: 2330 KGS

Ⓐ REMOVABLE COVER FOR MAIN LEAD ENTRY TO BE DRILLED BY CUSTOMER.

FOR MAXe3MINING

| | | |
|-------|----|------------|
| DWN. | EJ | 01.12.2015 |
| CHKD. | DK | 01.12.2015 |
| APPD. | JF | 01.12.2015 |

TECO 

OUTLINE DIMENSIONS
3-PHASE INDUCTION MOTOR

5 東元電機股份有限公司
5 TECO Elec. & Mach. Co., Ltd.

REV: 00