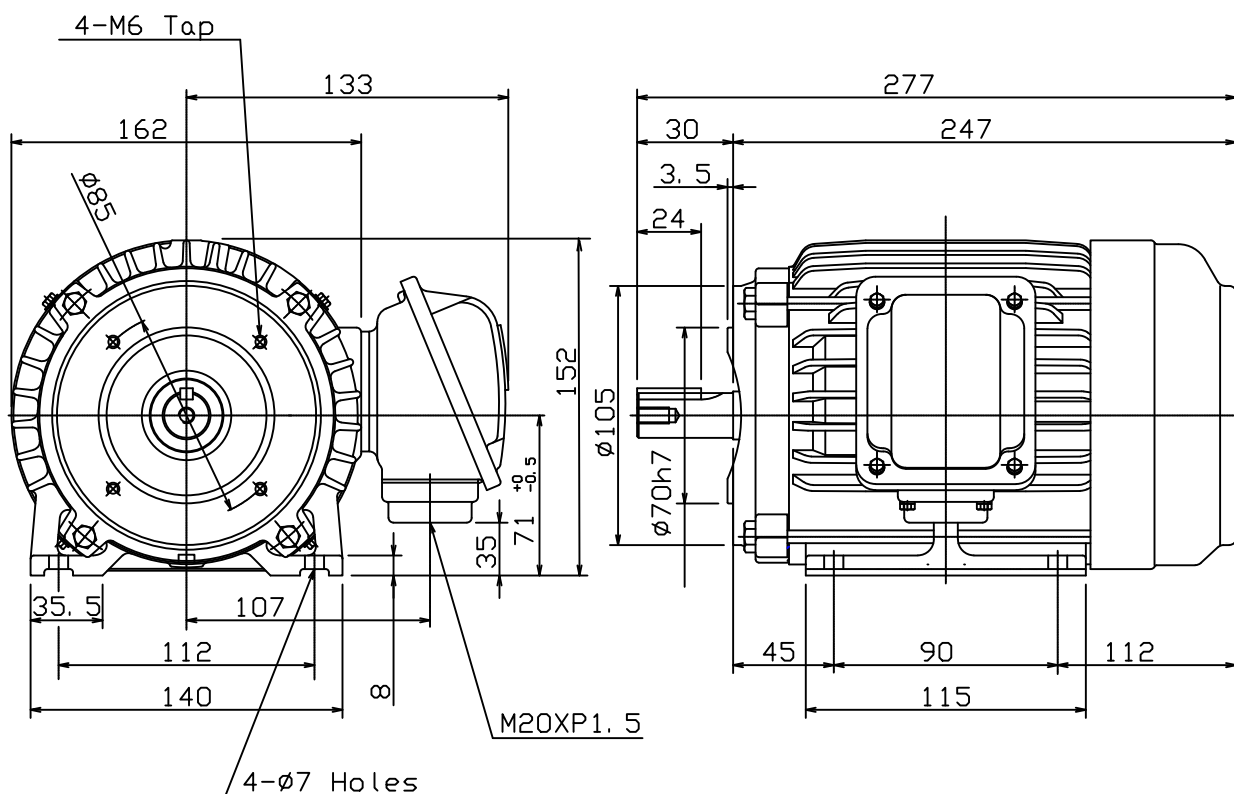


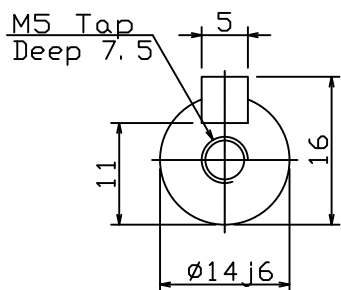
POLES	KW	HP	SYNCH RPM
2	0. 37	0. 50	3000
2	0. 55	0. 75	3000
4	0. 37	0. 50	1500
6	0. 18	0. 25	1000

Totally Enclosed Fan-Cooled Type, Squirrel-Cage Rotor.



NOTES:

1. FOOT & C FACE MOUNTED IM2101.
2. TYPICAL DIMENSIONS ONLY  
FOR CERTIFIED DIMENSIONS  
REFER TO TECO.
3. FOR BELT OR DIRECT DRIVE.



FOR MAXe3MINING AND  
MAXe3PREMIUM SEVERE DUTY

DWN.	EJ	01. 12. 15	東元電機股份有限公司 TECO ELEC. & MACH. CO., LTD. TAIWAN R. O. C.			REV : 00
CHKD.	DK	01. 12. 15				
APPD.	JF	01. 12. 15				