

TECO

OUTLINE DIMENSIONS 3-PHASE INDUCTION MOTOR

FRAME NO :

D180MC

POLES

KW

HP

SYNCH RPM

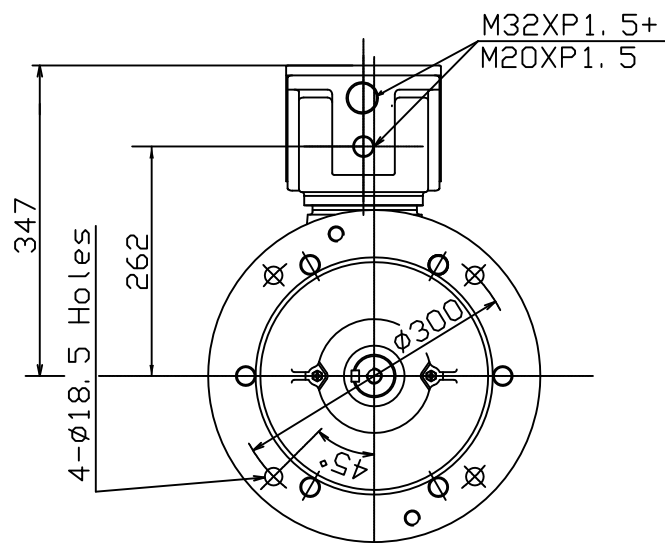
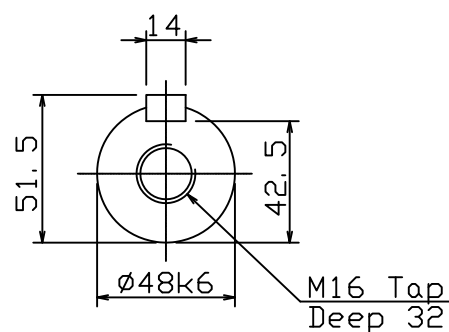
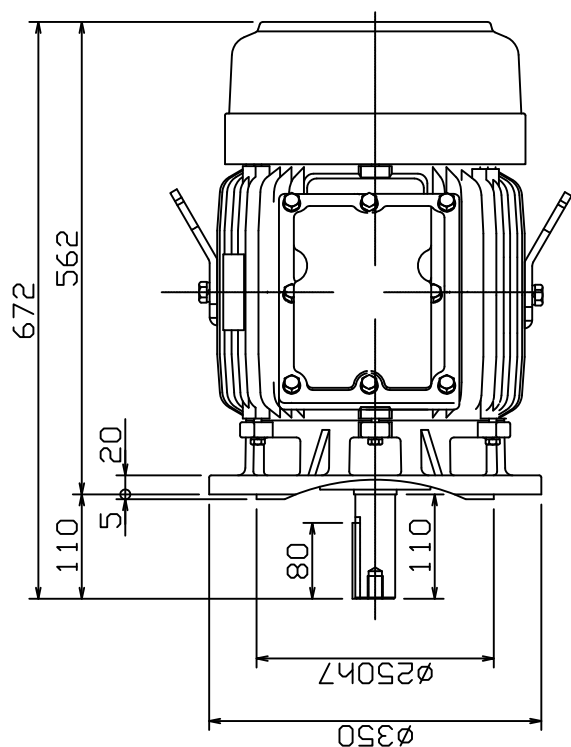
4

18.5

25

1500

Totally Enclosed Fan-Cooled Type, Squirrel-Cage Rotor.



Note:

1. IP55 Protection.
2. Ex de IIC T4, BASEEFA Approved.
3. With Thermistors.

FOR TECO FLAMEPROOF MOTOR



DWN.	AY	01. 05. 19
CHKD.	EJ	01. 05. 19
APPD.	LM	01. 05. 19

東元電機股份有限公司
TECO ELEC. & MACH. CO., LTD.
TAIWAN R. O. C.

TYPE:

AEUBXZ