

TECO

OUTLINE DIMENSIONS

MOTOR TYPE:

AEMVXZ-XXX

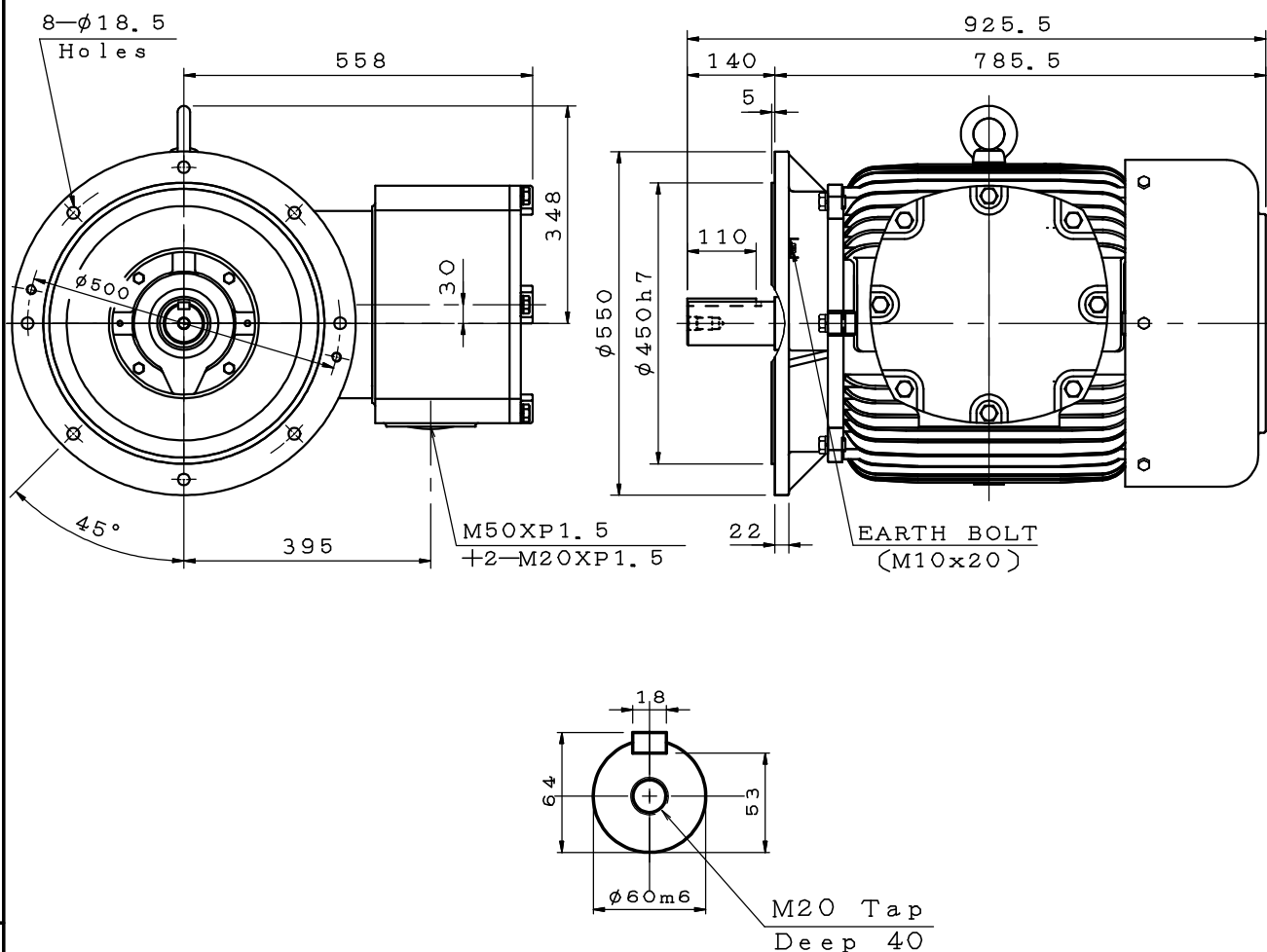
DATE

3-PHASE INDUCTION MOTOR

FRAME NO. 250MA

Pole	HP	kW	Hz	VOLT	r/min
2	100	75	.	.	.
Ins	Rating	Dimension in	Approx Weight	Bearings	
F	CONT.	mm		DE:6313C3	NDE:6313C3

Totally Enclosed Fan-Cooled Type. Squirrel-Cage Rotor.



Note:

1. Ex db IIB T4 Gb & Ex db I Mb (IECEX/ATEX).
2. IP56 Protection.
3. With Bearing RTD.
4. Fitted With SPM Adapter (2-AT-103).

KS21081-02

0	.	.
---	---	---

DWG.	陳奕元	11.10.21	東元電機股份有限公司 TECO Electric & Machinery Co., Ltd. TAIWAN	DWG NO.
CHKD.	陳奕元	11.10.21		31057H226420
APPD.	徐聰豪	11.10.21		