

# TECO

## OUTLINE DIMENSIONS

MOTOR TYPE:

AEMVXZ-XXX

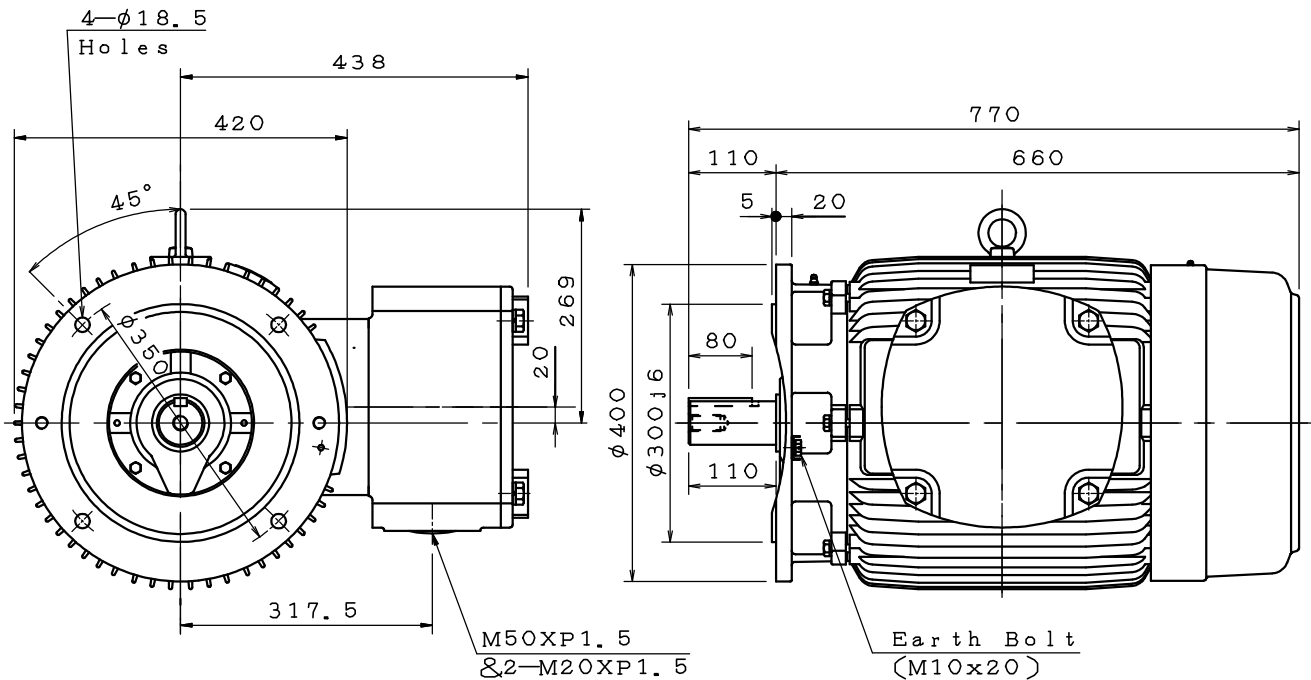
DATE

3-PHASE INDUCTION MOTOR

FRAME NO. 200LA

Pole	HP	kW	Hz	VOLT	r/min
2	.	.	50	.	3000
Ins	Rating	Dimension in	Approx Weight	Bearings	
F	CONT.	mm		DE: 6312C3	NDE: 6212C3

Totally Enclosed Fan Cooled Type. Squirrel-cage Rotor.



Note:

1. Ex db IIB T4 Gb & Ex db I Mb (IECEX/ATEX).
2. IP56 Protection.
3. With Bearing RTD.
4. Fitted With SPM Adapter (2-AT-103).

KS21081-02-00

$\diamond$	.		.
------------	---	--	---

DWG.	陳奕元	09.23.21	<b>東元電機股份有限公司</b> <b>TECO Electric &amp; Machinery Co., Ltd.</b> TAIWAN	DWG NO.
CHKD.	陳奕元	09.23.21		31057M070640
APPD.	簡塘軒	09.23.21		