

DATE _____

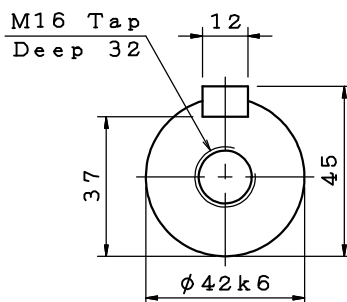
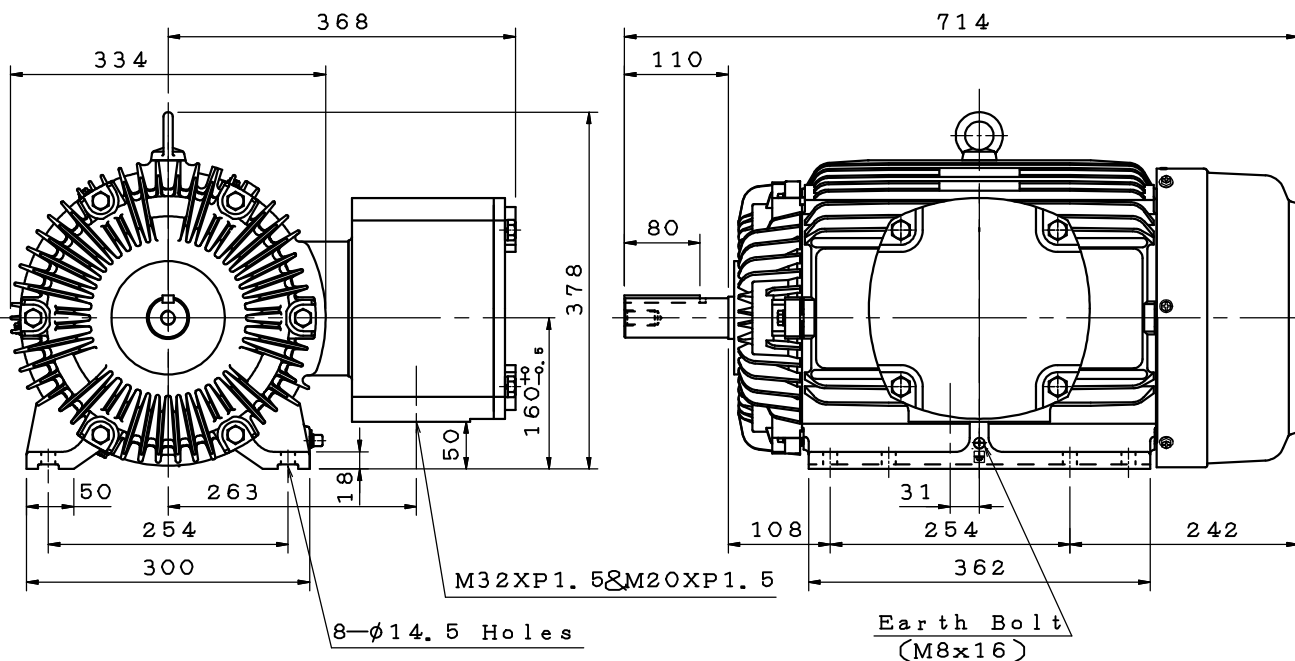
3-PHASE INDUCTION MOTOR

FRAME NO. 160L

Pole	HP	kW	Hz	VOLT	r/min
2	25	18.5	—	—	—

Ins	Rating	Dimension in	Approx Weight	Bearings
F	CONT.	mm	197 KG	DE:6309ZZC3 NDE:6307ZZC3

Totally Enclosed Fan-Cooled Type. Squirrel-cage Rotor.



Note :

1. Ex db IIB T4 Gb & Ex db I Mb (IECEX/ATEX).
2. IP56 Protection.

KS20044-01-00

DWG.	徐永勵	04.28.20	東元電機股份有限公司 TECO Electric & Machinery Co., Ltd. TAIWAN	DWG NO.	31057M144130
CHKD.	李耿芳	04.30.20			
APPD.	楊文斌	04.30.20			