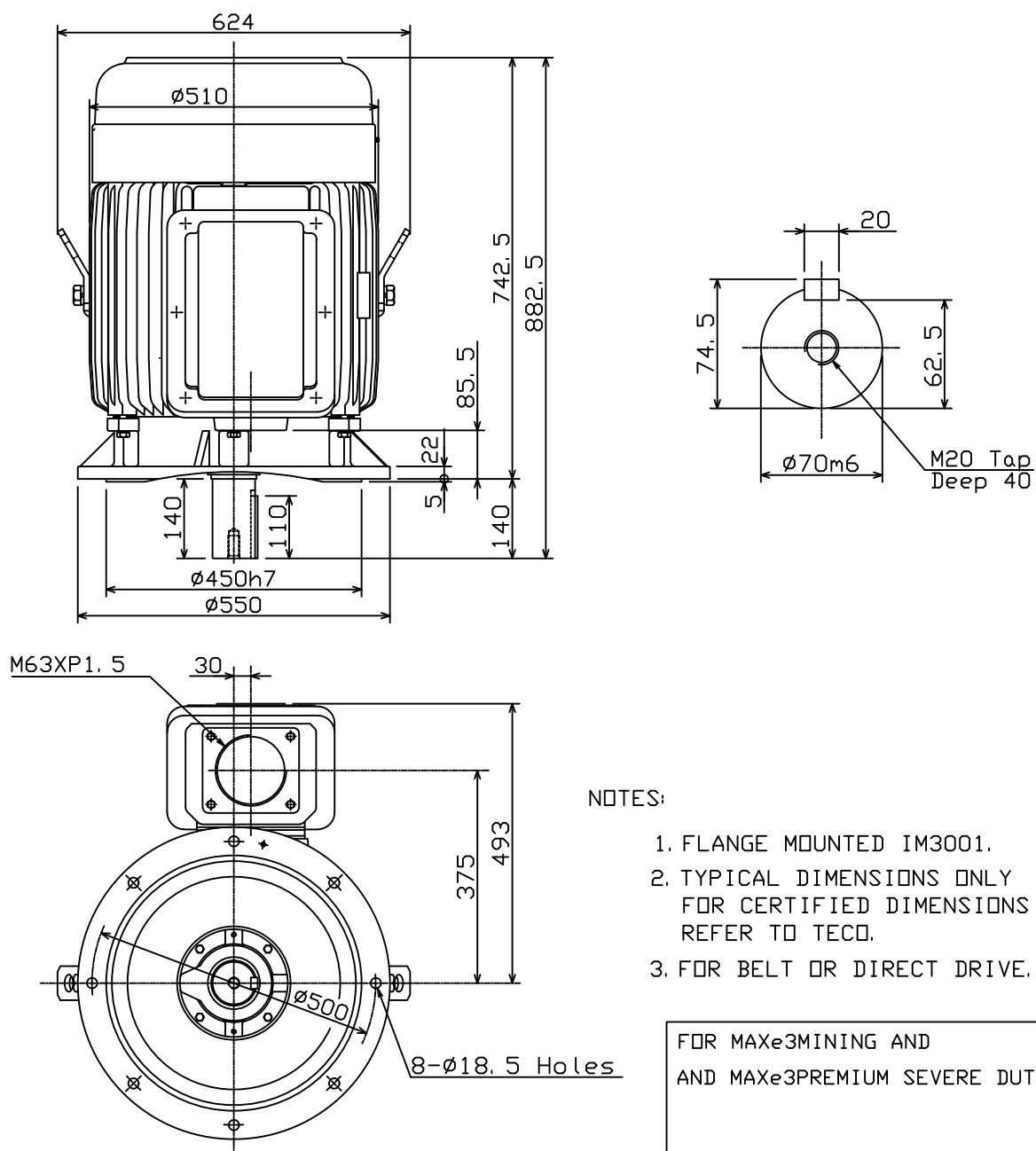


| | | |
|---|---|----------------------|
|  | OUTLINE DIMENSIONS 3-PHASE INDUCTION MOTOR | FRAME NO : D250SC |
|---|---|----------------------|

| POLES | HP | KW | SYNCH RPM |
|-------|----|----|-----------|
| 4 | 75 | 55 | 1500 |
| 6 | 50 | 37 | 1000 |
| 8 | 40 | 30 | 750 |
| | | | |

Totally Enclosed Fan-Cooled Type, Squirrel-Cage Rotor.



NOTES:

1. FLANGE MOUNTED IM3001.
2. TYPICAL DIMENSIONS ONLY FOR CERTIFIED DIMENSIONS REFER TO TECO.
3. FOR BELT OR DIRECT DRIVE.

FOR MAXe3MINING AND
AND MAXe3PREMIUM SEVERE DUTY

| | | | | |
|-------|----|------------|---|----------|
| ◇ | | | | |
| DWN. | EJ | 01. 12. 15 | 東元電機股份有限公司 TECO ELEC. & MACH. CO., LTD. TAIWAN R. O. C. | REV : 00 |
| CHKD. | DK | 01. 12. 15 | | |
| APPD. | JF | 01. 12. 15 | | |