

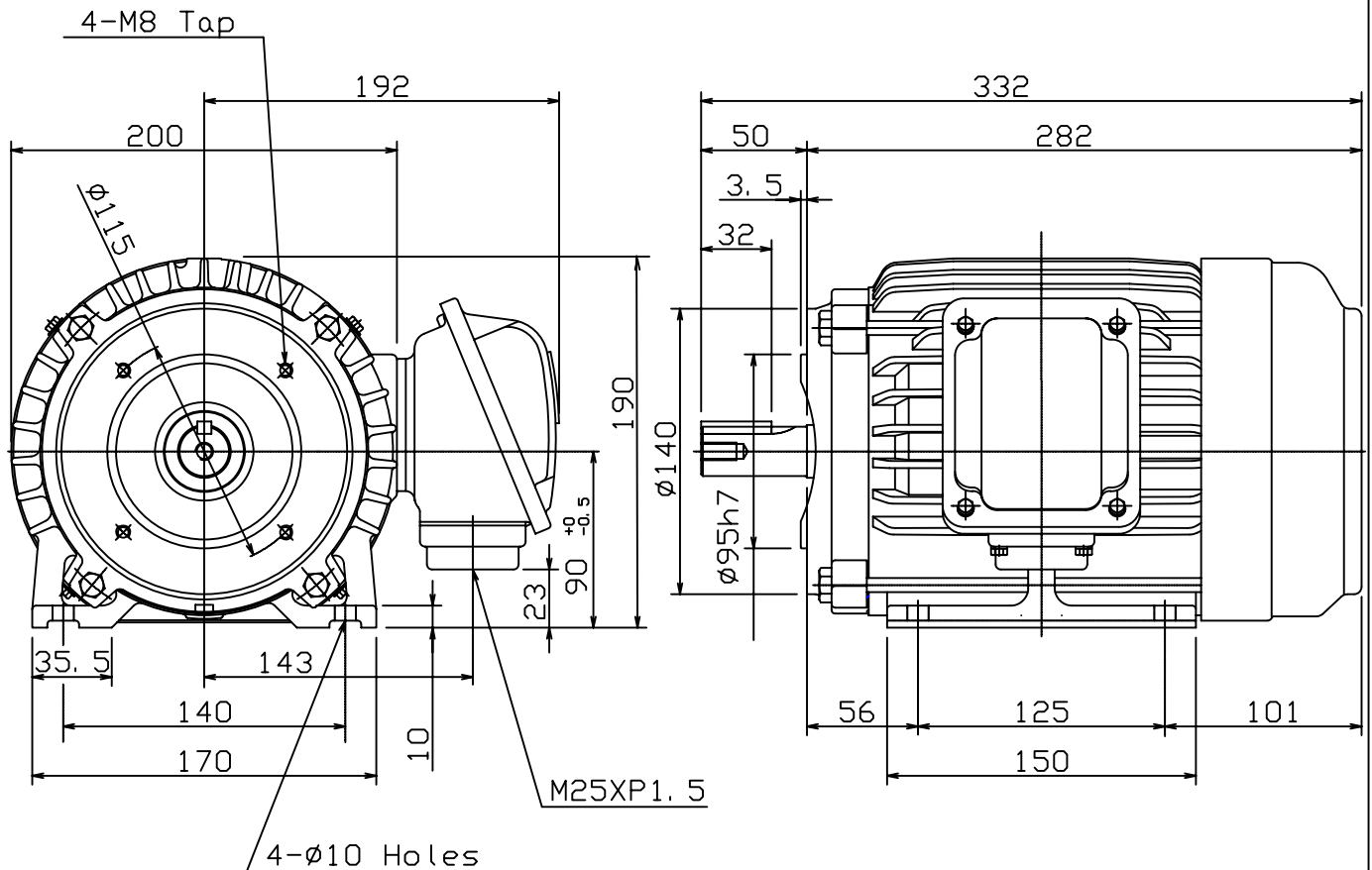
TECO

OUTLINE DIMENSIONS 3-PHASE INDUCTION MOTOR

FRAME NO :
D90L

POLES	KW	HP	SYNCH RPM
2	2.2	3	3000
4	1.5	2	1500
6	1.1	1.5	1000

Totally Enclosed Fan-Cooled Type, Squirrel-Cage Rotor.



NOTES:

1. FOOT & C FACE MOUNTED IM2101.
2. TYPICAL DIMENSIONS ONLY FOR CERTIFIED DIMENSIONS REFER TO TECO.
3. FOR BELT OR DIRECT DRIVE.

FOR MAXe3MINING AND
AND MAXe3PREMIUM SEVERE DUTY

◇			
DWN.	EJ	01. 12. 15	<p>東元電機股份有限公司 TECO ELEC. & MACH. CO., LTD. TAIWAN R. O. C.</p>
CHKD.	DK	01. 12. 15	
APPD.	JF	01. 12. 15	
			REV : 00